

go NATIVE with your Plants

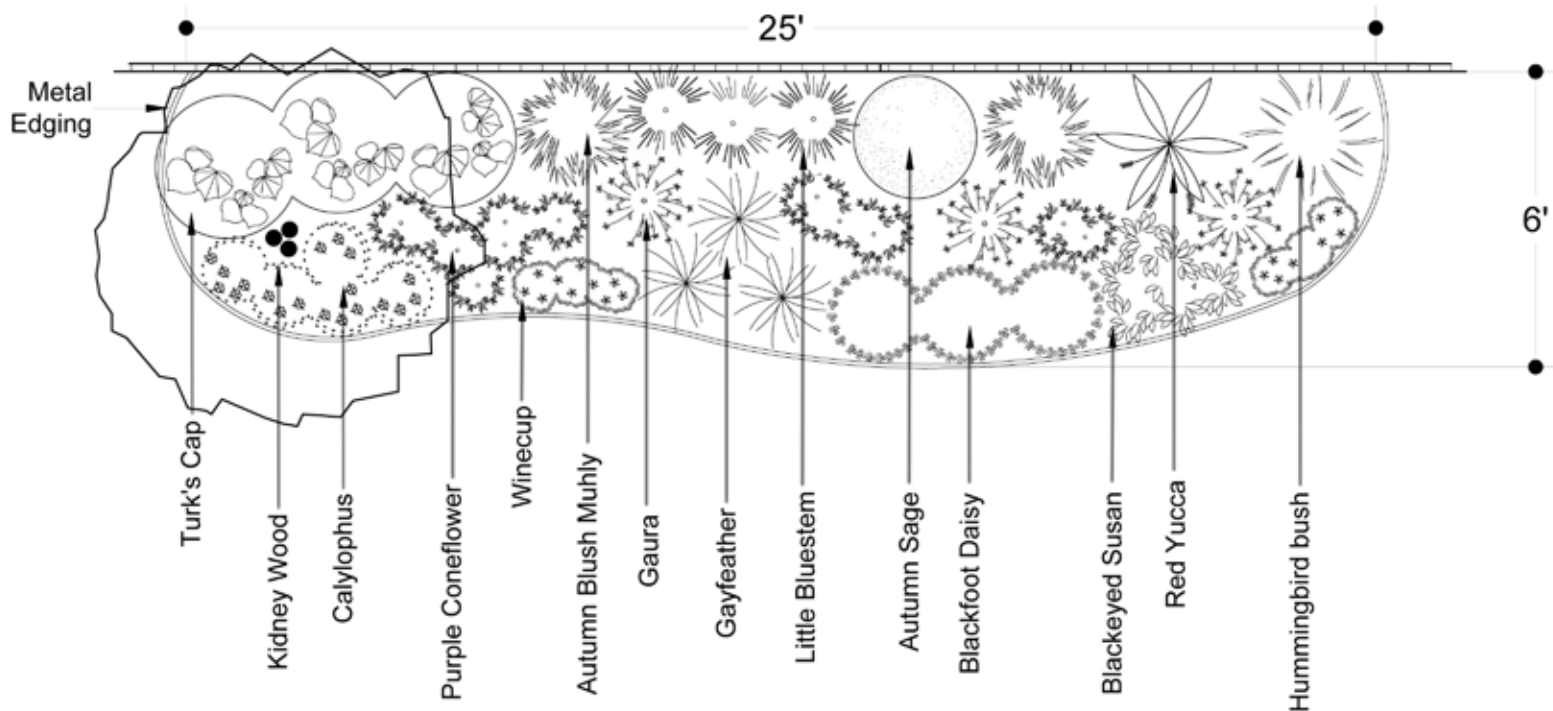


Using Texas Native sun plants in a mixed border

Plant Palette

- Kidneywood (TR)
- Turk's Cap (PR)
- Calylophus (PR)
- Purple Coneflower (PR)
- Winecup (PR)
- Autumn Blush Muhly (GR)
- Gaura (PR)
- Gayfeather (PR)
- Little Bluestem (PR)
- Autumn Sage (PR)
- Blackfoot Daisy (PR)
- Blackeyed Susan (PR)
- Red Yucca (SH)
- Hummingbird Bush (PR)


WESTON GARDENS
IN BLOOM INC.



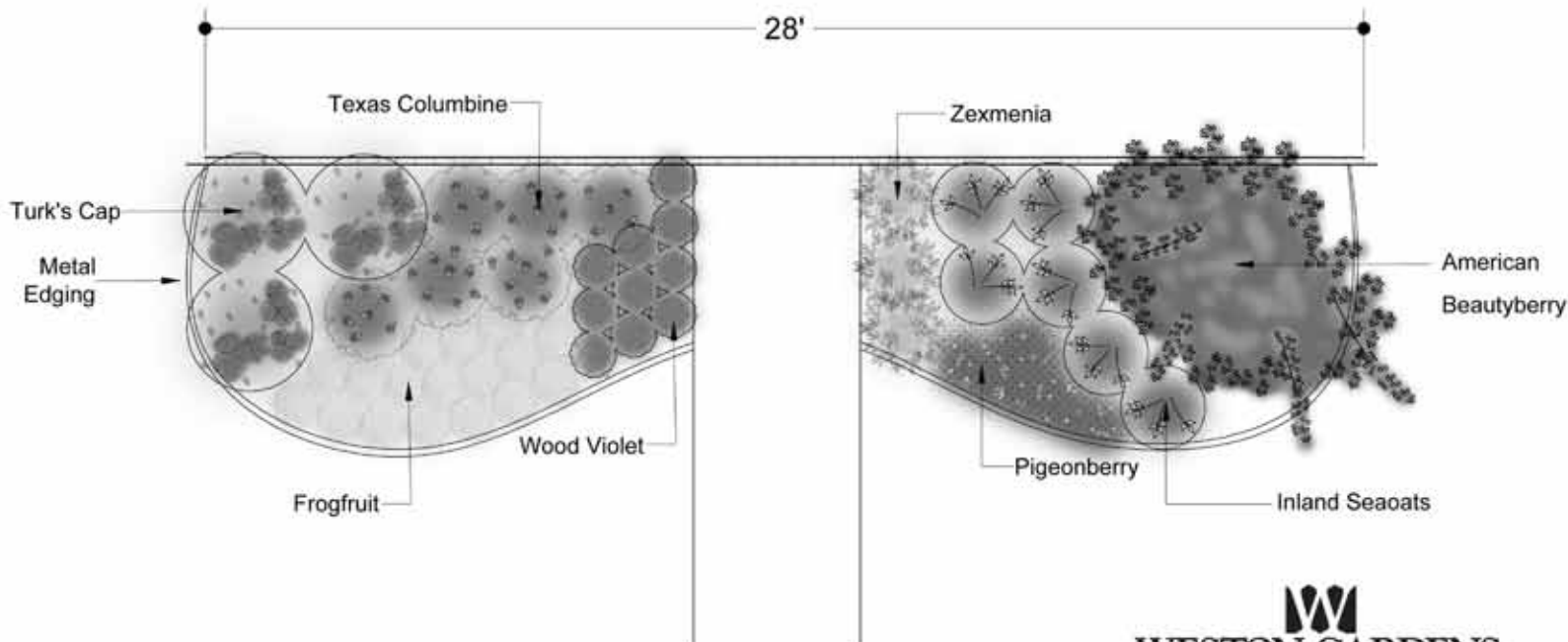


Using Texas Native shade plants in a mixed border

Plant Palette

Turk's Cap (PR)
 Frogfruit (GC)
 Texas Columbine (PR)
 Wood Violet (GC)

Zexmenia (PR)
 Pigeonberry (GC)
 Inland Seoats (GR)
 American Beautyberry (PR)




WESTON GARDENS
 IN BLOOM INC.

817.572.0549 Directions: From 1-20 exit Anglin Drive (2 miles south of 1-20) www.westongardens.com
 Garden Center/Demonstration Garden Hours: Mon. - Sat. 9am - 6 pm Sun. noon - 5 pm